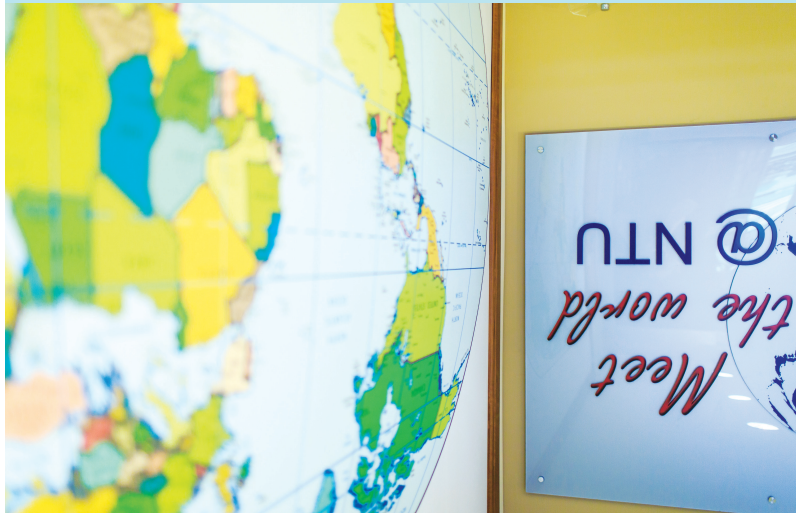


Disclaimer: All information correct at time of printing.  
Website: [www.ntu.edu.sg/saO/studentsupport@ntu.edu.sg](http://www.ntu.edu.sg/saO/studentsupport@ntu.edu.sg)  
Tel: (65) 6790 6823 Email: [SAOstudentsupport@ntu.edu.sg](mailto:SAOstudentsupport@ntu.edu.sg)  
#04-02, Student Services Centre  
42 Nanyang Avenue, Singapore 639815  
Nanyang Technological University  
Student & Academic Services Department  
Student Affairs Office  
Plus Singapore's MRT and LRT System Map  
NTU Campus  
Your 2016/2017 Guide to the



## Emergency Hotlines

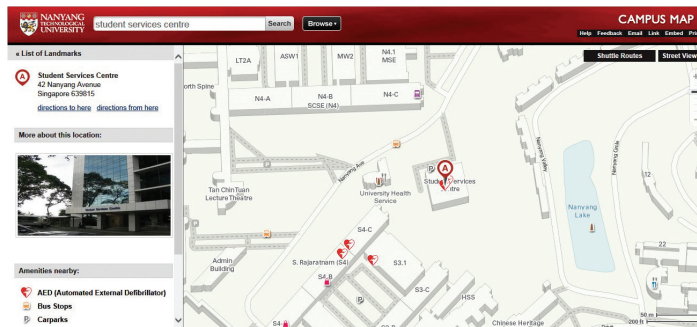
Police	Tel: 999 (24-hour)
Ambulance	Tel: 995 (24-hour)
NTU Student Wellbeing Centre	Tel: 6790 4462
Fullerton Healthcare @NTU	Tel: 6793 6828
NTU Campus Security	Tel: 6790 5200 (24-hour)
NTU Fault Reporting Centre	Tel: 6790 4777 (24-hr)

For more crisis helplines, visit [www.ntu.edu.sg/studentwellbeing/contactus/Pages/community.aspx](http://www.ntu.edu.sg/studentwellbeing/contactus/Pages/community.aspx)

## Need help finding your way around?



Use the interactive map at [www.ntu.edu.sg/AboutNTU/visitingntu/Pages/location.aspx](http://www.ntu.edu.sg/AboutNTU/visitingntu/Pages/location.aspx) to locate lecture theatres, tutorial rooms and other facilities. You can also take virtual tours of our campus or create an avatar and explore our virtual campus at this website.



Explore the campus on **Google Street View** to view the 360° panoramic street images along NTU roads.

View the full list of student organisations under 'Campus Life', 'Clubs and Communities' at [www.ntu.edu.sg](http://www.ntu.edu.sg).

## Let's Go!

Join an NTU student organisation today. Make friends and discover new cultures.



## Getting Around



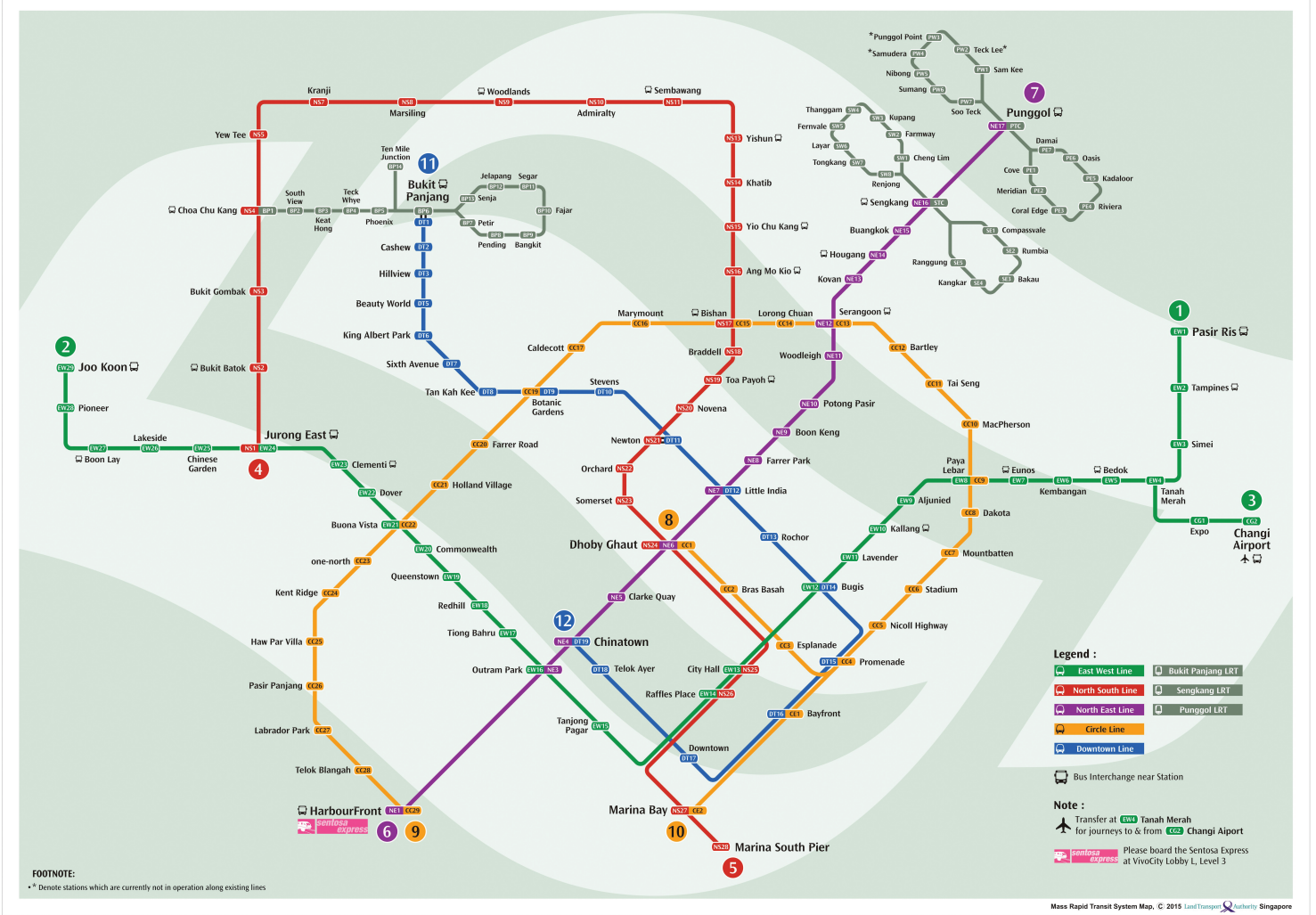
### Taxi

You can hail a taxi along the road, at a taxi stand, or make a phone booking with one of the many taxi companies in Singapore. Please note that a booking fee applies to phone booking. Taxi fares in Singapore are charged by the taxi meter and are based on a flag down rate and distance travelled. The flag down rate ranges from S\$3.00 to S\$5.50 (depending on taxi type). Please check with the driver or taxi company on the surcharge and ask for a receipt at the end of the trip.

### Phone Booking Hotlines

Common Taxi Booking Number	(+65 6-DIAL-CAB) +65 6-3425-222
Comfort & CityCab	+65 6552-1111
Premier Taxi	+65 6363-6888
SMRT Taxi	+65 6555-8888
Trans-Cab	+65 6555-3333
Prime Taxi	+65 6778-0808

## System map



## Hello, Singapore!

There is so much to experience in multicultural and cosmopolitan Singapore!



Night Safari – Get ready for exciting animal encounters in the dead of the night.



National Museum of Singapore – View artefacts of Singapore's socio-cultural history.



Singapore Flyer – get a breathtaking view of Singapore's skyline.



Lau Pa Sat Festival Market – Sample dishes well-loved by Singaporeans.



Sentosa – Enjoy exhilarating attractions and beautiful beaches.



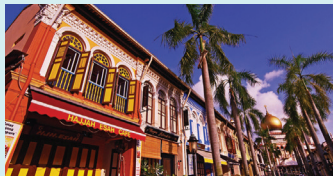
Helix Bridge – Enjoy a panoramic view of Singapore's city skyline.



New Year Celebrations – one of the biggest celebrations in Singapore.



National Day – Join Singaporeans in nationwide celebrations.



Kampong Glam – Explore its cultural landmarks and charming shophouses.



Chinatown – A must-visit enclave for a peek into Chinese culture in Singapore.



F1 Singapore Grand Prix – Catch Formula One cars blazing across the Marina Bay Street circuit.



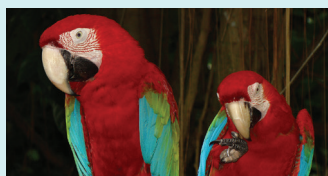
Zouk Out – Participate in one of Asia's biggest music dance festivals.



Little India – Immerse yourself in an authentic Indian experience.



Katong – View heritage houses that bear influences of Peranakan culture.



Jurong Bird Park – The largest bird park in the world is just around the corner from NTU.



Chinese Dragon Dance – catch this Chinese dance performed during the Lunar New Year.

### Bus

Buses operate from 5.30am to midnight daily. Information panels at bus stops provide useful route and fare information for the bus services available at that stop. For more information, please visit [www.sbstransit.com.sg](http://www.sbstransit.com.sg) or [www.smrt.com.sg](http://www.smrt.com.sg).

### Mass Rapid Transit (MRT) & Light Rapid Transit (LRT)

MRT is a popular mode of travel to get around Singapore. The LRT, is the light rail component of Singapore's rail network, acting as feeder services to the MRT network. Trains operate from 5.30am to midnight daily. For more information on public transport fares, visit [www.transitlink.com.sg](http://www.transitlink.com.sg) or [www.mytransport.sg](http://www.mytransport.sg).

### Contactless Smart (CEPAS - Compliant) Cards

The ez-link card and the NETS FlashPay card are contactless tap-and-go Smart cards for public transit use on the MRT, LRT and buses. You can get the card from the sales points at the TransitLink Ticket Offices located at

MRT stations and bus interchanges, Passenger Service Centres within most MRT stations and 7-Eleven stores. Visit [www.ezlink.com.sg](http://www.ezlink.com.sg) or [www.nets.com.sg](http://www.nets.com.sg) for more information on the Smart Cards.

More About Singapore	<a href="http://www.yoursingapore.com">www.yoursingapore.com</a>
Public Transport Journey Planner	<a href="http://www.transitlink.com.sg">www.transitlink.com.sg</a>
ENQUIRIES	
TransitLink	1800-2255-663 (1800-CALL ONE) <a href="http://www.transitlink.com.sg">www.transitlink.com.sg</a>
SBS Transit (public bus service)	1800-287-2727 <a href="http://www.sbstransit.com.sg">www.sbstransit.com.sg</a>
SMRT (public bus and MRT/LRT services)	1800-336-8900 <a href="http://www.smrt.com.sg">www.smrt.com.sg</a>
Smart Card Information	+65 6274-1212 <a href="http://www.nets.com.sg/netsflashpay">www.nets.com.sg/netsflashpay</a> +65 6496-8300 <a href="http://www.ezlink.com.sg">www.ezlink.com.sg</a>





NTU CAMPUS DIRECTORY			
COLLEGES & SCHOOLS	Location	Grid	
<b>College of Engineering</b> School of Chemical and Biomedical Engineering (SCBE) • College of Engineering (CoE) • Division of Chemical & Biomolecular Engineering (CBE) • Division of Bioengineering (BIE)	62 & 70 Nanyang Drive	F6	
	N1.3, Level 1		
	N1.2, Level B3		
	N1.3, Level B5		
<b>School of Civil and Environmental Engineering (CEE)</b> • CEE General Office • Laboratories/Workshops	50 Nanyang Avenue	F6	
	N1, Level 1	N1, Level B1-B5	
<b>School of Computer Science and Engineering (SCSE)</b> • SCSE General Office • Laboratories	50 Nanyang Avenue	E6/D6	
	N4, Level 2	N4, Level 1, B1-B3	
<b>School of Electrical and Electronic Engineering (EEE)</b> • EEE General Office • Laboratories/Workshops	50 Nanyang Avenue	F7/E7/E8	
	S1, Level B1	S2, Level B2	
<b>School of Materials Science and Engineering (MSE)</b> • MSE General Office • Laboratories	50 Nanyang Avenue	D6	
	N4.1, Level 1	N4.1, Level B1-B4	
<b>School of Mechanical and Aerospace Engineering (MAE)</b> • MAE General Office • Laboratories/Workshops	50 Nanyang Avenue	E5/D5	
	N3, Level 2	N3, Level 1-B4	
<b>College of Science</b> College of Science (CoS) General Office School of Biological Sciences (SBS) • SBS General Office	60 Nanyang Drive	F6	
	Level 1		
<b>School of Physical and Mathematical Sciences (SPMS)</b> • SPMS General Office • Chemistry & Biological Chemistry General Office • Physics & Applied Physics General Office • Mathematical Sciences General Office	21 Nanyang Link	E8	
	Level 4	SPMS, CBC-Level 2	
<b>College of Business</b> Nanyang Business School (NBS) • NBS General Office	50 Nanyang Avenue	E7/D7	
	S3, Level B3		
<b>College of Humanities, Arts, &amp; Social Sciences</b> School of Art, Design and Media (ADM) • ADM General Office	81 Nanyang Drive	D4	
	Level 1 & 3		
<b>School of Humanities and Social Sciences (HSS)</b> • HSS General Office	14 Nanyang Drive	D7	
	Block 1		
<b>Wee Kim Wee School of Communication and Information (WKWSCI)</b> • WKWSCI General Office	31 Nanyang Link	F8	
	Level 4		
<b>Lee Kong Chian School of Medicine (LKCSOM)</b> • LKCSOM General Office	59 Nanyang Drive	G6	
	Experimental Medicine Building		
INSTITUTES & CENTRES	Location	Grid	
<b>Cornell-Nanyang Institute of Hospitality Management</b>	50 Nanyang Avenue	E7	
	S3, Level B3A, Postgraduate Office		
<b>Earth Observatory of Singapore</b>	50 Nanyang Avenue	F6	
	N2, Level 1		
<b>National Institute of Education (NIE)</b> • Arts • Education • Library & Canteen • NIE Administration • Physical Education • Science	1 Nanyang Walk	G5	
	Block 3	Block 2	
<b>Research Techno Plaza</b> • Nanyang Technopreneurship Center (NTC)	50 Nanyang Drive	F7	
	Level 2		
<b>Singapore Centre on Environmental Life Sciences Engineering</b>	60 Nanyang Drive	F6	
	SBS, Level 1		
<b>Singapore-MIT Alliance</b>	50 Nanyang Avenue	F6	
	N2, Level B2		
<b>S. Rajaratnam School of International Studies (RSIS)</b>	50 Nanyang Avenue	E7	
	S4, Level B4		
<b>Sport Science and Management (SSM)</b>	1 Nanyang Walk	G4	
	NIE, Block 5, Level 3		
LECTURE THEATRES	Location	Grid	
Lecture Theatres 1 & 1A Tan Chin Tuan Lecture Theatre & Lecture Theatre 2A	Level 2 & 1	E5/F5	
	Level 2 & 1	E6	
Lecture Theatres 3-18 Lecture Theatres 19, 19A & 20 Lecture Theatres 22-27 Lecture Theatres 28 & 29	Level 2 & 4	E6	
	Level B1 & B2	F6	
Lee Kong Chian Lecture Theatre SPMS Lecture Theatre 1 SPMS Lecture Theatres 2, 3, 4 & 5	Level B1	E7	
	Level B2	E8	
<b>LIBRARIES</b>	ADM, Level 1	D4	
	WKW SCI Level 1	F8	
Communication and Information Library Chinese Library Humanities and Social Sciences Library Lee Wee Nam Library NIE Library Wang Gung Wu Library	N2, Level B2	F6	
	S3.2, Level B5	E7	
<b>LANDMARKS</b>	S4, Level B3c	E7	
	North Spine, Level 2	E5	
Chinese Heritage Centre Nanyang Lake Yunnan Garden	NIE, Block 4	G5	
	Chinese Heritage Centre, Level 1	D7	
<b>ADMINISTRATIVE OFFICES</b>	Location	Grid	
	Administration Building • Corporate Communications Office • Office of Human Resources • President's Office	50 Nanyang Avenue Level 1 Level 4 Level 6	
University Health Services • Student Wellbeing Centre	36 Nanyang Avenue	D6	
	Level 2		
<b>Centre for IT Services</b>	76 Nanyang Drive	F5	
	N2.1, Level B1		
<b>Office of Health and Safety</b>	N2.1 Level B3	F5	
<b>Development Office</b>	76 Nanyang Drive	F5	
	N2.1, Level B4		
<b>Nanyang Executive Centre (NEC)</b> • Alumni Affairs Office • Institute of Advanced Studies • NEC Office	60 Nanyang View	B3	
	Level 2 Level 2 Level 2		
<b>Office of Development &amp; Facilities Management</b>	76 Nanyang Drive	F5	
	N2.1, Level B2		
<b>Office of Finance</b>	N2.1, Level B3	F5	
<b>One Stop @ SAC</b>	50 Nanyang Avenue	E5	
	NS3, Level 1		
<b>Research Support Office</b>	N2.1, Level B4	F5	
<b>Student Services Centre</b> • Career and Attachment Office • NTU Shared Services • Office of Academic Services • Office of Admissions and Financial Aid • Office of Global Education & Mobility • Office of Housing & Auxiliary Services • Student Affairs Office	42 Nanyang Avenue (refer to directory)	D6	
BANKS & ATMS	Location	Grid	
Citibank ATM OCBC Bank, NTU Branch OCBC ATM POSB ATM POSB ATM State Bank of India UOB ATM	N2.1, Level 1	F5	
	North Spine, Level 1	E5	
South Spine, Level B3 Canteen 2, Level 1 Canteen 2, Level 1 N2.1, Level 1 Canteen B, Level B3 N2.1, Level 1 N2.1, Level 1		E8	
		C5	
Retail Outlets	NIE, Block 4	G5	
	South Spine, Level B3	E7	
University Health Service Canteen 2, Level 1 Canteen 2, Level 1 Canteen 2, Level 1		C5	
		C5	
<b>SERVICE STATIONS</b>	Location	Grid	
	AXS Station AXS Station AXS Station Photo-Me Machine Photo-Me Machine Photocopy Services Photocopy Services Photocopy Services Self-Service Automated Machine (SAM) Self-Service Automated Machine (SAM)	South Spine, Level B3 N2.1 Level 1 Canteen 2, Level 1 N2.1, Level 1 South Spine, Level B3 Business Library, B3 S4, Level B1 LWN Library Level 2 N1, Level B1 South Spine, Level B3 North Spine, Level 1	
<b>OTHER BUILDINGS / FACILITIES</b>	Location	Grid	
	Centre for Chinese Language & Culture Innovation & Technology Transfer Office Nanyang Auditorium Nanyang House President's Lodge Sports & Recreation Centre Student Activities Centre (SAC) & Global Lounge Yunnan Corner	Nanyang Drive Nanyang Drive Nanyang Avenue Nanyang Hill Nanyang Circle Nanyang Green NS3, Level 1 Students Walk	
<b>EATERIES</b>	Location	Grid	
	Art Pastry @ADM Artesse Café The Quad Café Spruce Bistro @ WKWSCI Vanner Bistro Spruce Bistro Bar The Coffee Bean and Tea Leaf Staff Club (Fusion Spoon Restaurant) The Attic McDonald's The New World Café Starbucks Coffee Subway Peach Garden Restaurant North Spine Food Court KFC KFC Coffee Pizza Hut Express Jollibean U+ Koufu @ the South Spine 1982 A Taste Of Nanyang Umisushi 8 Immortals Vegetarian Stall Liao Liao Canteens at Halls of Residences	ADM HSS, Level 1 SBS, Level B1 WKWSCI, Level 1 Nanyang Auditorium Nanyang Auditorium Near Nanyang Auditorium Campus Clubhouse Campus Clubhouse, N2.1, Level 1 N2.1, Level 1 N2.1, Level 1 N2.1, Level 1 N2.1, Level 1 N2.1, Level 1 N2.1, Level 1 N2.1, Level 1 South Spine, Canteen B, Level B4 South Spine, Canteen B, Level B4 South Spine, Canteen B, Level B4 South Spine, Canteen B, Level B4 Refer to eateries on NTU Campus Map	